

FLYTECH

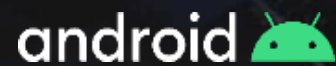
POS337N3

Versatile All-in-One 15.6" POS Solution



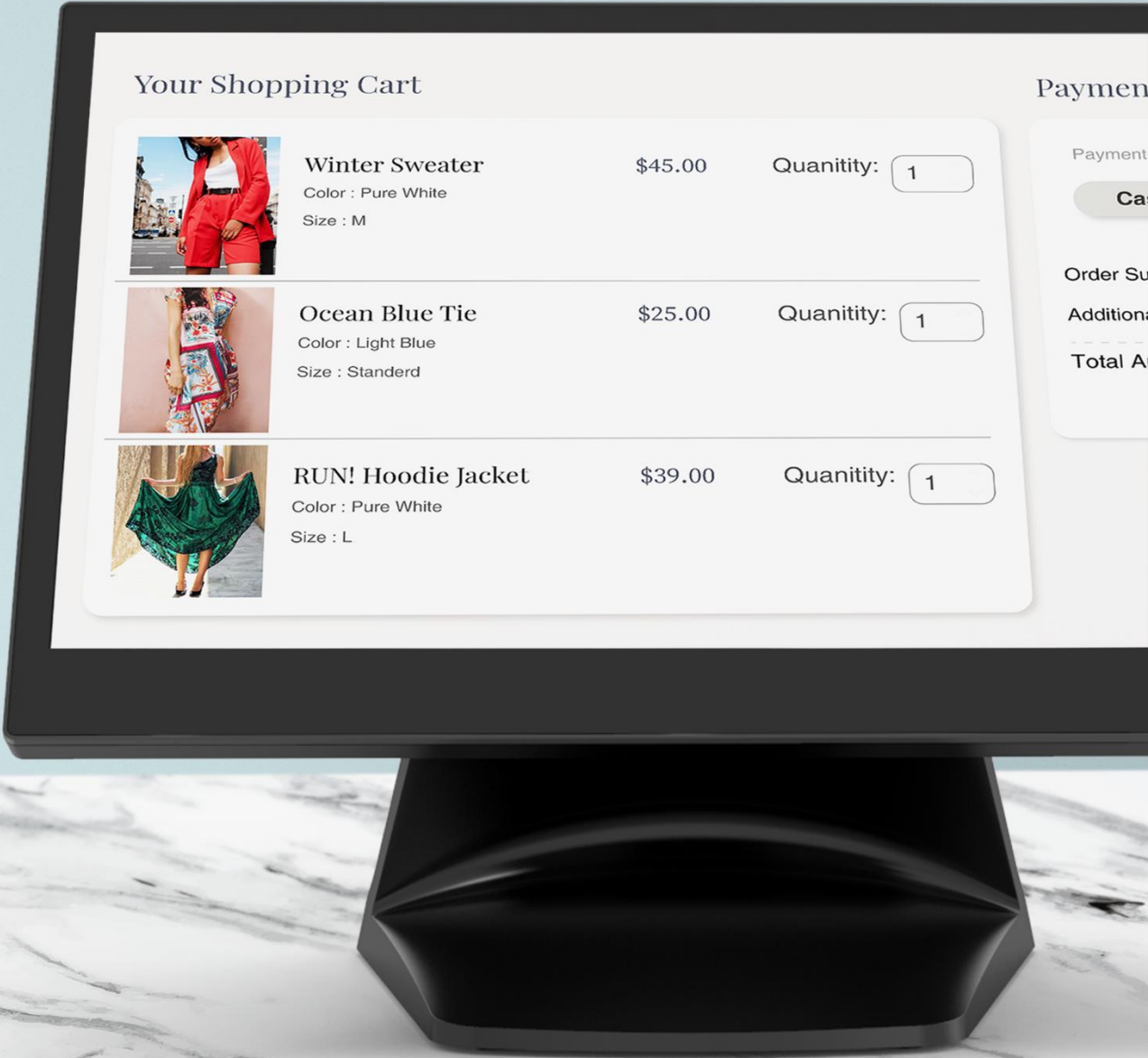
Unleash Power and Versatility

POS337N3 features the latest Intel® Alder Lake-N platform, delivering superior performance and efficiency. With seamless compatibility across Windows, Linux, and Android 13, it ensures flexibility and reliability for all your operational needs.



Enhanced Visual Experience

Experience unparalleled clarity with the 15.6" main screen, featuring a stunning Full HD display (1920 x 1080). This high-quality display ensures vivid, sharp images, capturing the visual effects you need for an enhanced viewing experience.



Quick Access for Easy Maintenance

The service door design on the rear allows quick access to the SSD, ensuring effortless repairs and maintenance. Experience greater convenience and efficiency in keeping your system running smoothly.



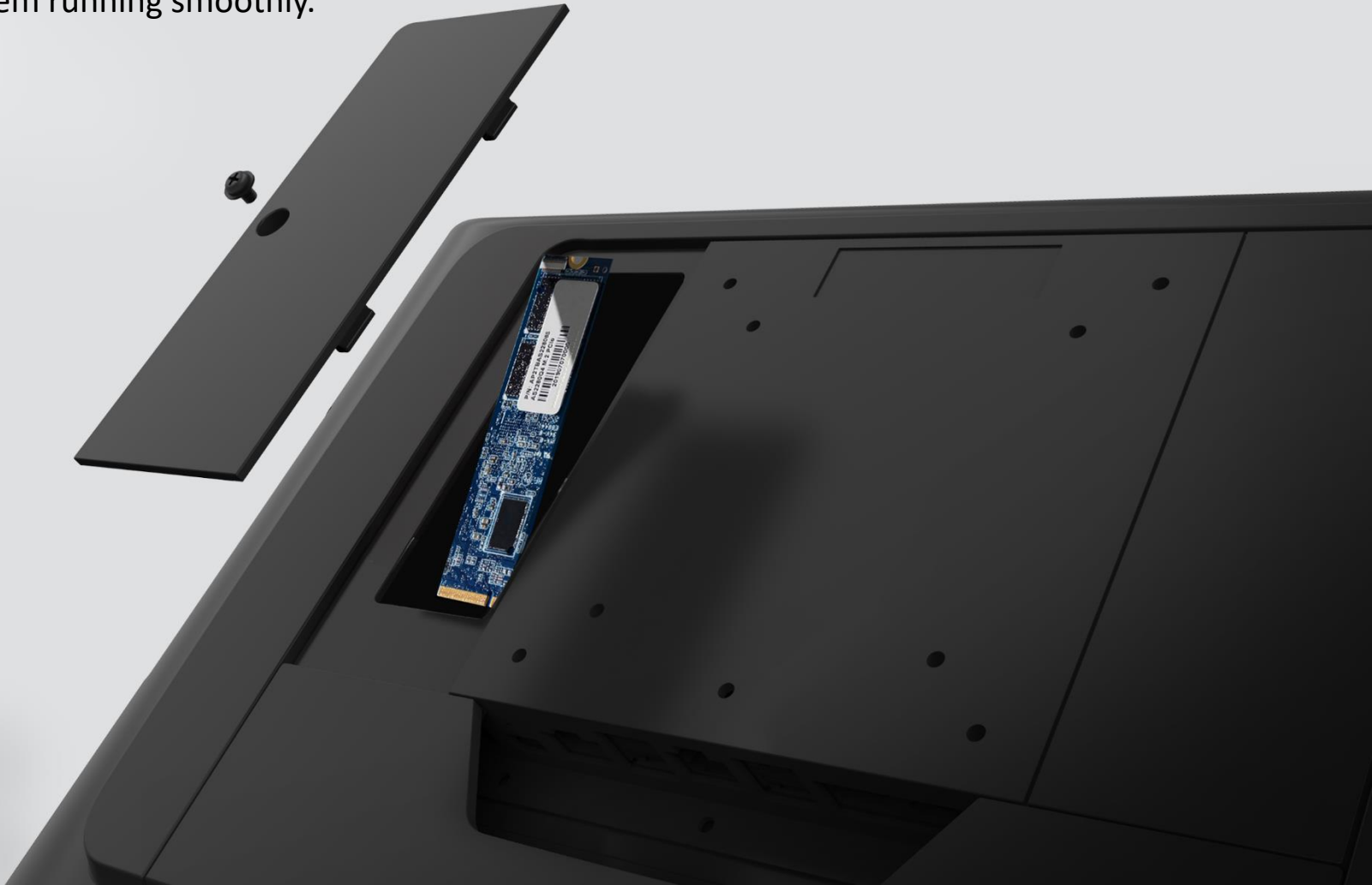
Streamline
Maintenance
Process



Minimize
Downtime



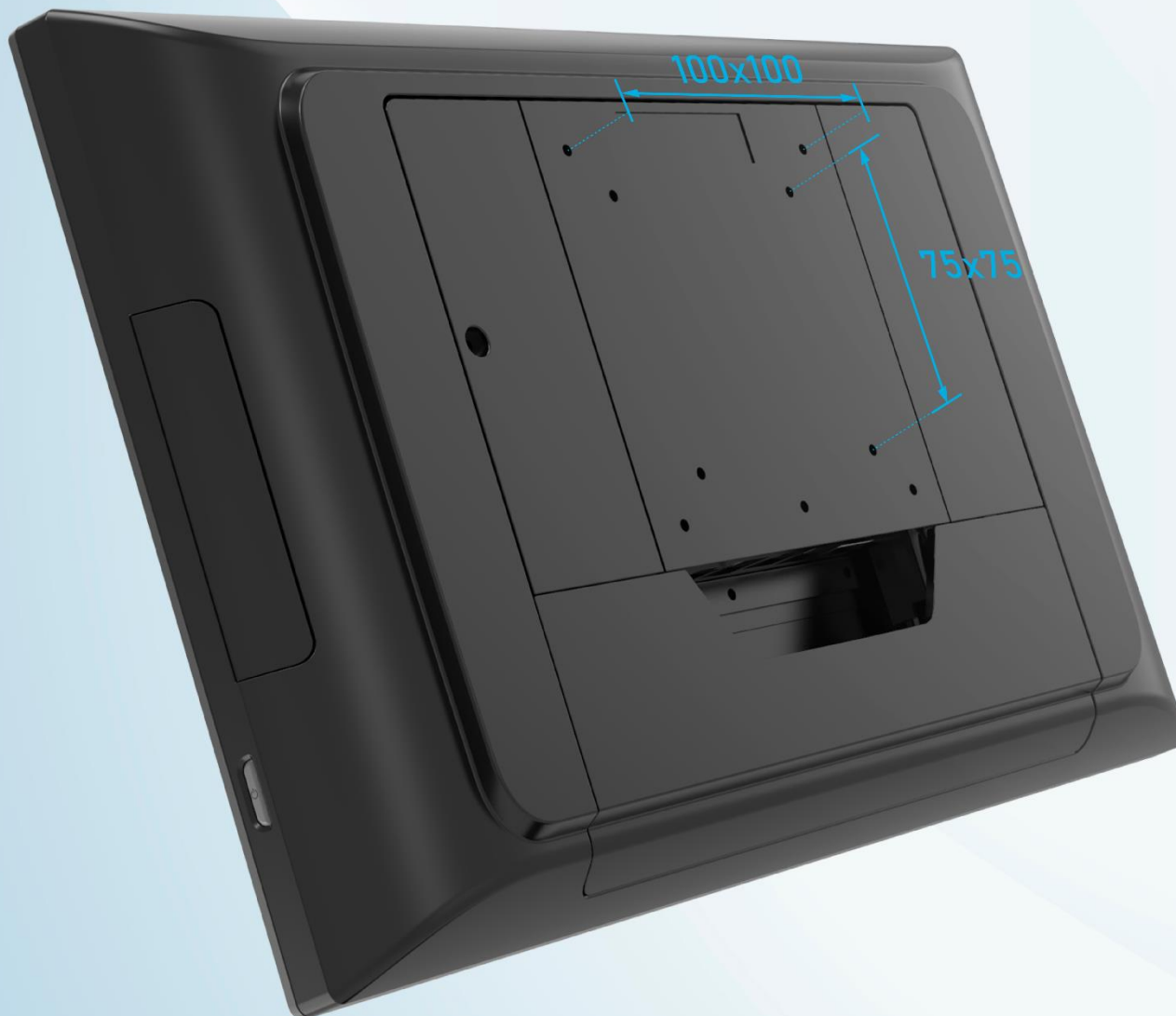
Smooth
Operations



Maximize Operational Efficiency

POS337N3 offers a wide range of peripherals that can be easily mounted on the left/right sides of the display. Enjoy seamless integration and enhanced functionality, creating a personalized solution that empowers your business and elevates the customer experience.

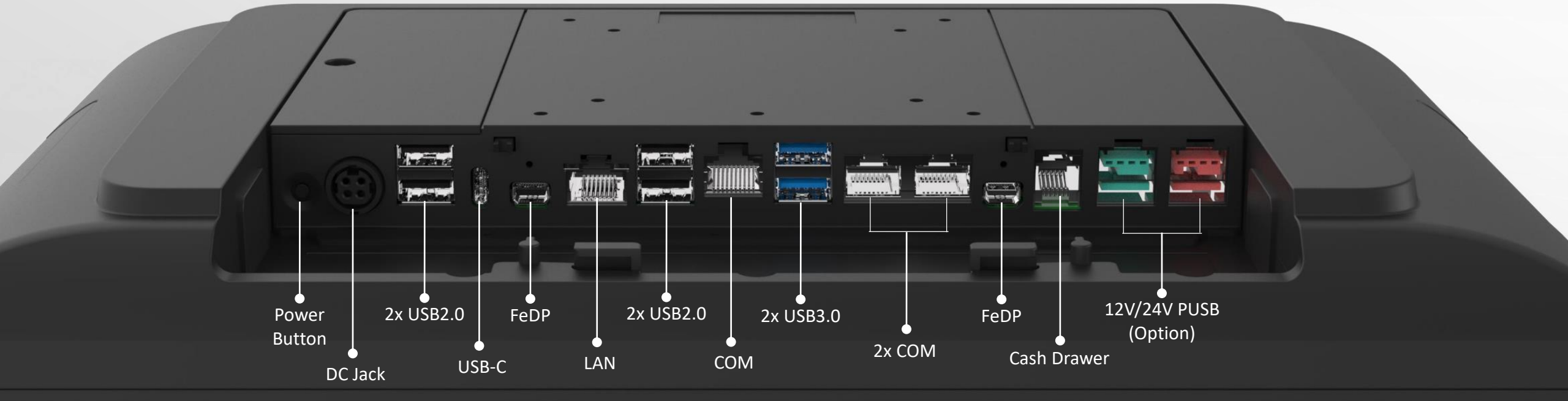




Versatile Mounting Solutions

The back of the POS337N3 is equipped with 75x75 and 100x100 VESA standards, allowing for seamless wall mounting or an effortless transition to alternative stand options.

I/O Ports



Specifications

System	Motherboard	G35
	Processor	Intel® Alder Lake N Processor: N97 / i3-N305
	Memory	1x DDR4 up to 8GB
	Storage	128GB SSD (M.2)
Display	Size and Resolution	15.6" 1920x1080
	Touch Screen	True-Flat PCAP multi-touch
I/O Ports	USB Type-A	2x USB3.0, 4x USB2.0
	USB Type-C	1x USB3.0 full-functioned (DP/PD 5V/3A, 12V/3A)
	FeDP	2x Flytech proprietary miniDP (1x for main display, 1x for 2nd display)
	Serial Port	3x RJ48 (standard RS232) (default 0V; 5V,12V)
	LAN	1x RJ45
	Cash Drawer	1x RJ11
	DC Jack	1x 4PIN (with latch)
	Powered USB	1x Powered USB 12V, 1x Powered USB 24V
Optional I/O	Internal Speaker	1x 3W (Option)
Audio	Power Button	1
Indicator	Power Adapter	65W/19V (120W/19V with 1x PUSB 12V & 1x PUSB 24V)
Power	WLAN + BT	802.11 series + BT5.0 (Option)
Communication	MSR	3-Track MSR (USB)
Peripheral (option)	Fingerprint	Fingerprint Reader (USB)
	NFC	NFC Reader (USB)
	2D Scanner	2D Scanner (USB)
	Customer Display	LCM display 2 x 20 characters (USB)
	2 nd Display	11.6" 2 nd Display
Certificate	EMC & Safety	FCC Class A, CE Mark, LVD
Environment	Operating Temperature	0°C ~ 35°C (32°F ~ 95°F)
	Storage Temperature	-20°C ~ 60°C (-4°F ~ 140°F)
	Humidity	20% ~ 85% RH non-condensing
Dimensions	W x H x D	369 x 264 x 210 mm (14.5" x 10.4" x 8.3")
Mounting	VESA Mount	75 x 75, 100 x 100
OS Supported		Windows 10 IoT Enterprise, Linux, Android 13.0



POS337N3

Versatile All-in-One 15.6" POS Solution

